

**CHILD & FAMILY  
DEVELOPMENT PROGRAMS**

**HEAD START**

**REPORT TO THE PUBLIC**

**2014 - 2015**

**COMMUNITY ACTION TEAM, INC.**





# Report to the Public

2014-2015

## IN THIS REPORT:

- Funding
- Budgetary Expenses
- Enrollment
- Review & Audits
- Health Status
- Parent Engagement
- Kindergarten Readiness



## Funding

The total amount of public and private funds received and the amount from each source.

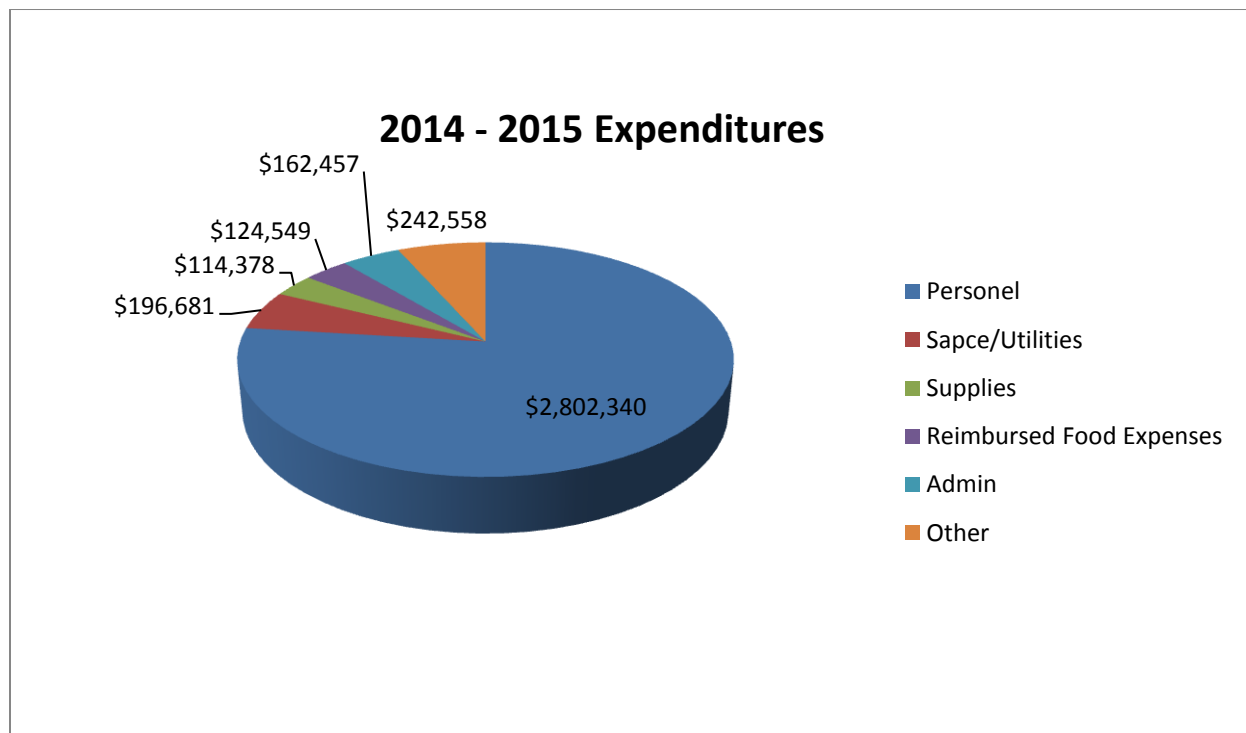
U.S. Department of Health & Human Services: \$1,824,725.

Oregon Department of Education: \$1,693,689

Department of Agriculture: \$124,549

Matching In-kind: \$447,529

## Budgetary Expenditures





## Enrollment

Funded Enrollment: 371

Average Monthly Enrollment: 100%

Total Served: 458

44% (204): Income below 100% federal poverty line.

26% (120): Receipt of public assistance such as TANF, SSI.

6% (25): Status as foster child.

4% (18): Status as homeless.

7% (31): Over income.

13% (60): Income between 100% and 130% of federal poverty line.

## Review & Audit

### Office of Head Start:

The Office of Head Start (OHS) promotes the school readiness of young children from low-income families through agencies in their local community. Head Start and Early Head Start programs support the mental, social, and emotional development of children from birth to age 5.

In March 2014, our program underwent the tri-annual monitoring review. The reviewers entering information into the protocol identified one area of non-compliance. The review report stated the area of non-compliance was 1304.20(a)(1)(ii) which states the grantee, in collaboration with parents, must obtain from a health care professional a determination as to whether the child is up-to-date on a schedule of age appropriate preventative and primary health care with includes medical, dental and mental health. The program immediately took steps to improve the system of tracking and ensured compliance with 1304.20 (a)(1)(ii) by revamping the system used to document client services, monitoring reports, and monitoring timelines.

During the follow-up review September 9, 2014, the Program Specialist gathered documentation, interviewed staff, and reported to the Office of Head Start all the work and





efforts the program made to ensure compliance. The Office of Head Start determined the program was in full compliance with applicable standards and regulations.

### Financial Audit:

The firm of Kern & Thompson, LLC, completed the financial audit for the fiscal year ending June 30, 2014 on March 30, 2015. The firm reported Community Action Team was in compliance as stated in their report. "In our opinion, Community Action Team, Inc. complied, in all material respects, with the types of compliance requirements referred to above that could have a direct and material effect on each of its major federal programs for the year ended June 30, 2014 ended in accordance with accounting principles generally accepted in the United States of America."

## Health Status

92% (421) children had ongoing source of continuous, accessible health care.

84% (385) were up-to-date with Well Child exams.

97% (446) children were up-to-date, received all possible immunizations for age, or met the state's guidelines for an exemption to immunizations.

86% (395) children had continuous, accessible dental care.

86% (395) were up-to-date with Dental Exams.

21% (98) children had identifiable disabilities.

49,880 USDA meals were served.

## Parent Engagement

Parents are provided numerous opportunities to strengthen leadership skills, support active involvement in their child's education, and to connect to their communities in meaningful ways. For example, parents are active members of the Policy Council, Center Parent Committee's, volunteer activities in the centers, service on the agency's Board of Directors, participate in job training through the CTA employment training program, participate in higher education

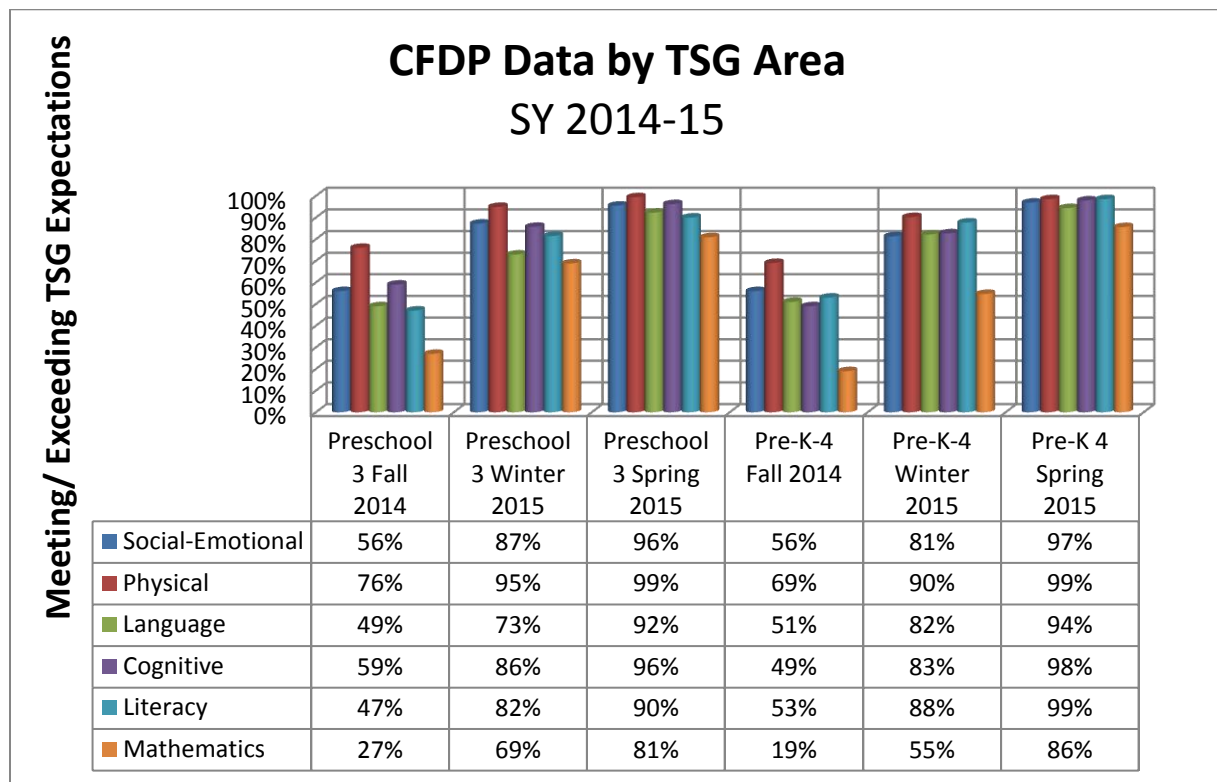




opportunities and serve on committees that have a positive impact on their communities and their families. During the 2014 – 2015 year, forty-six staff members were current or former Head Start parents, 256 parents, guardians and community members volunteered a total of 3,764 hours, by donated time and expertise. The total volunteer dollar amount exceeded \$57,253.

## Kindergarten Readiness

Historically, CFDP’s child outcome data reflects that many children enter the Head Start program below the “widely held expectations” (WHE) for development and learning in the areas of language, literacy, and mathematics. The following chart highlights the growth from fall to spring for seven areas of development and learning showing by age the percent of children meeting or exceeding the WHE at each checkpoint period.



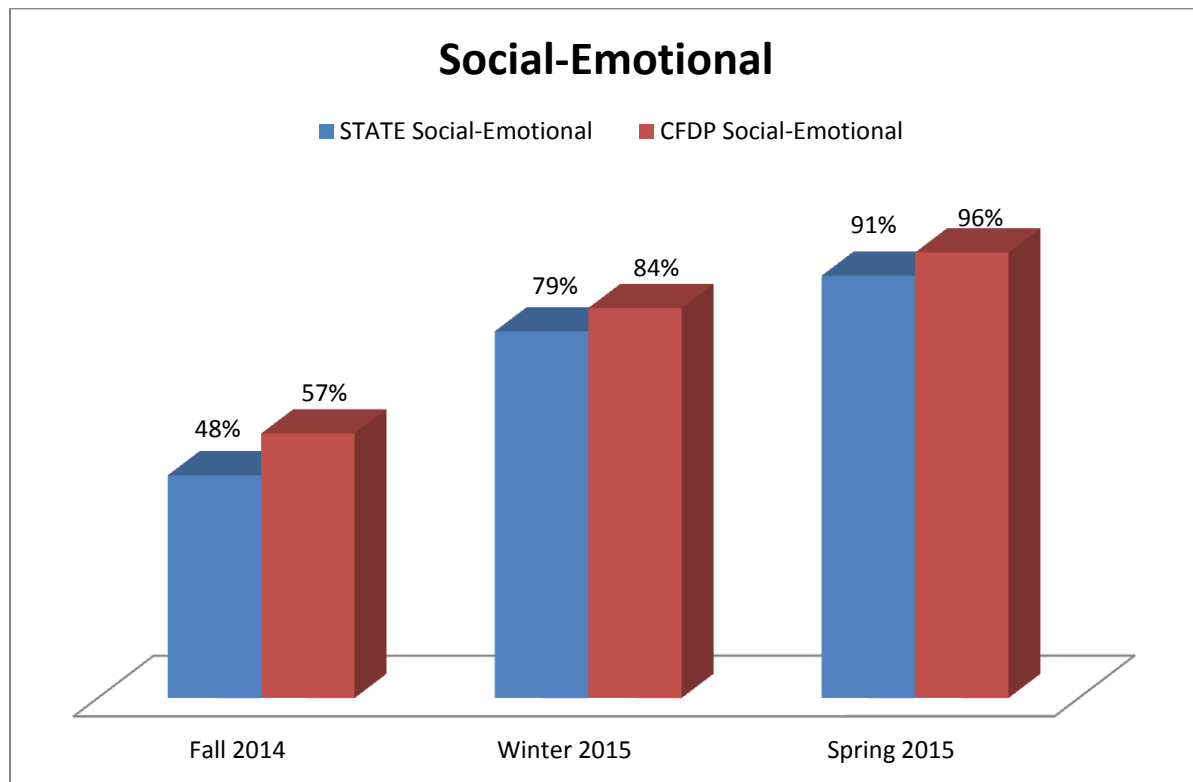
The program uses Teaching Strategies GOLD (TSG) to assess child outcomes. Each area of development is broken down into specific objectives and dimensions. The table below represents the most critical objectives or dimensions for the program to consider for teaching and learning. Although the gains from fall to spring are high, these are the specific objectives

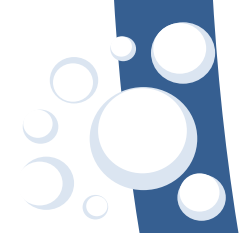
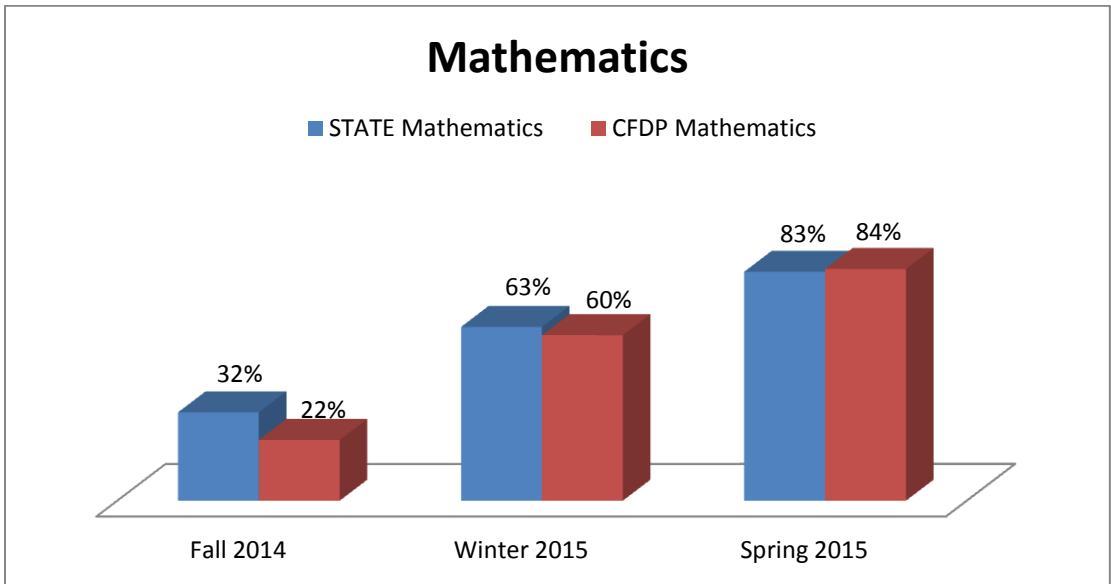
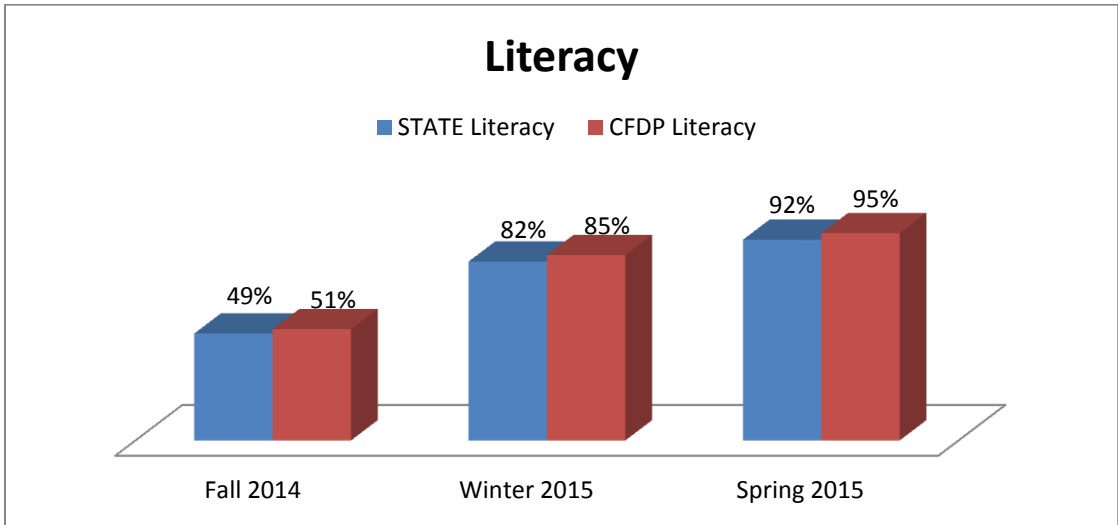
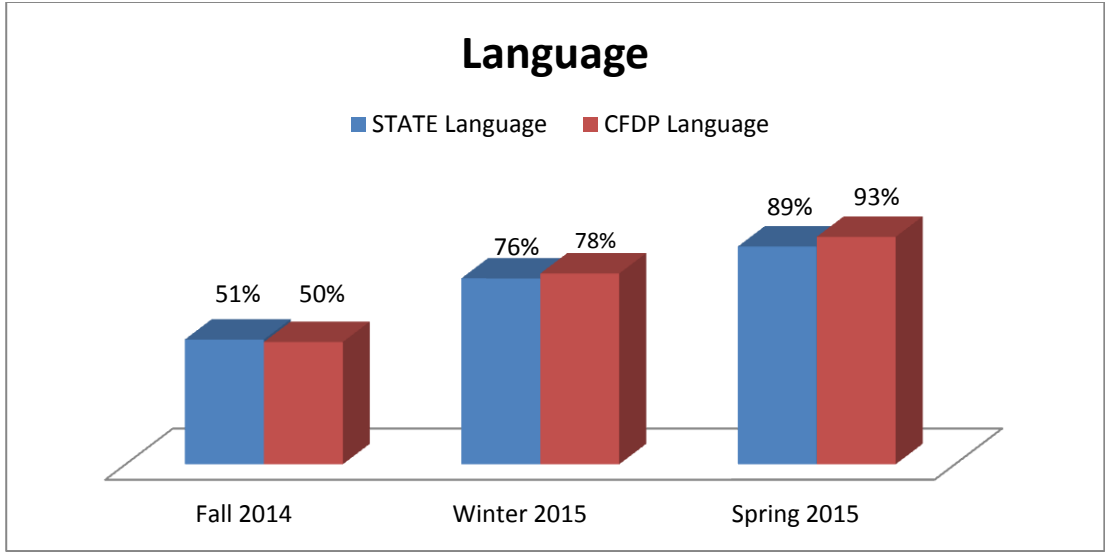


and dimensions that consistently have the highest number of children below the WHE at each checkpoint period from year-to-year.

TSG AREA	Objective / Dimension	Indicator	2014 Fall Baseline	2015 Winter	2015 Spring
			> 50% of children ↓ WHE	> 25% of children ↓ WHE	> 12.5% children ↓ WHE
Language ☆	9d	Tells about another time or place	55%	28%	11%
Literacy ☼	15a	Notices and discriminates rhyme	78%	46%	22%
	16a	Identifies and names letters	49%	25%	15%
	16b	Uses letter-sound knowledge	59%	34%	16%
Mathematics ☼	20a	Counts	61%	35%	18%
	20b	Quantifies	69%	35%	15%
	20c	Connects numerals with their quantities	65%	33%	17%

These last four charts show a comparison of the data compiled statewide with our program wide data in the areas of social-emotional, language, literacy and mathematics for the 2014-15 school year.







In accordance with Federal civil rights law and U.S. Department of Agriculture (USDA) civil rights regulations and policies, the USDA, its Agencies, offices, and employees, and institutions participating in or administering USDA programs are prohibited from discriminating based on race, color, national origin, sex, disability, age, or reprisal or retaliation for prior civil rights activity in any program or activity conducted or funded by USDA.

Persons with disabilities who require alternative means of communication for program information (e.g. Braille, large print, audiotape, American Sign Language, etc.), should contact the Agency (State or local) where they applied for benefits. Individuals who are deaf, hard of hearing or have speech disabilities may contact USDA through the Federal Relay Service at (800) 877-8339. Additionally, program information may be made available in languages other than English.

To file a program complaint of discrimination, complete the [USDA Program Discrimination Complaint Form](#), (AD-3027) found online at: [http://www.ascr.usda.gov/complaint\\_filing\\_cust.html](http://www.ascr.usda.gov/complaint_filing_cust.html), and at any USDA office, or write a letter addressed to USDA and provide in the letter all of the information requested in the form. To request a copy of the complaint form, call (866) 632-9992. Submit your completed form or letter to USDA by:

- (1) mail: U.S. Department of Agriculture  
Office of the Assistant Secretary  
for Civil Rights 1400  
Independence Avenue, SW  
Washington, D.C. 20250-9410;
- (2) fax: (202) 690-7442; or
- (3) email: [program.intake@usda.gov](mailto:program.intake@usda.gov)